

Getting Started

The EVM ships with HUA out of box(OOB) demo and Power On Self Test(POST) preloaded. The HUA demo is loaded into NOR flash and the POST is loaded into EEPROM. At power ON all User/Debug LEDs are ON by default. Once OOB/POST execution completes the User/Debug LEDs will turn OFF.

The default EVM boot mode/configuration switches are set such as to run HUA OOB demo automatically at power ON. To see the output of HUA demo please refer steps 1 to 5 presented in this Quick Setup Guide.

Please refer to the EVM User Guide for software installation and other details

Important Notes when handling the EVM

- Plug in all the cables before powering ON the EVM to ensure proper grounding.
- Do not unnecessarily flex the boards, while inserting cables. Excessive flexing can break the PCB traces.
- Use proper ESD procedures when handling the EVM.
- Warning: Some components on the EVM may be too hot to touch with your bare hand when power is on.

Online Documentation

- TMX320C6657 processor website  
<http://www.ti.com/product/TMS320C6657>
- MCSDK BIOS reference:  
<http://e2e.ti.com/support/embedded/bios/default.aspx>
- CCS support link:  
[http://e2e.ti.com/support/development\\_tools/code\\_composer\\_studio/default.aspx](http://e2e.ti.com/support/development_tools/code_composer_studio/default.aspx)

C6657 EVM Information:

<http://www.einfochips.com/TI-TMDXEVMC6657L.php>

This link contains

- Hardware & Software details
- User Guide
- Technical Reference Manual
- TMS320C6657 Datasheet

C6657 EVM Support:

Please write to [evm6657support@einfochips.com](mailto:evm6657support@einfochips.com) for technical queries related to this EVM.

einfochips Address:

einfochips Limited  
303,Parishram Building, 5/B Rashmi Society,  
Mithakhali Six Road, Navarangpura,  
Ahmedabad - 380009,  
Gujarat, INDIA.  
Tel: +91-79-2656 3705  
Fax: +91-79-2656 0722  
<http://www.einfochips.com/>

©2012 Texas Instruments Incorporated

TI Worldwide Technical Support

Internet

TI Semiconductor Product Information Center Home Page  
[support.ti.com](http://support.ti.com)  
TI Semiconductor KnowledgeBase Home page  
[support.ti.com/sc/knowledgebase](http://support.ti.com/sc/knowledgebase)

Product Information Centers

Americas

Phone +1(972) 644-5580 Fax +1(972)927-6377  
Internet/Email [support.ti.com/sc/pic/americas.htm](http://support.ti.com/sc/pic/americas.htm)

Europe, Middle East and Africa

Phone  
European Free Call 00800-ASK-TEXAS  
(00800 275 83927)  
International +49 (0) 81 61 80 2121  
Russian Support +7 495 981 0701

Note: The European Free Call (Toll Free) number is not active in all countries. If you have technical difficulty calling the free call number, please use the international number above.

Fax +{49} (0) 81 61 80 2045  
Internet [support.ti.com/sc/pic/euro.htm](http://support.ti.com/sc/pic/euro.htm)

Japan

Fax  
International +81-3-3344-5317  
Domestic 0120-81-0036  
Internet/Email  
International [support.ti.com/sc/pic/japan.htm](http://support.ti.com/sc/pic/japan.htm)  
Domestic [www.tij.co.jp/pic](http://www.tij.co.jp/pic)

Asia

Phone  
International +91-80-413816651-  
Domestic Toll-Free-Number Toll-Free-Number  
Australia 800-999-084 Malaysia 1-800-80-3973  
China 800-820-8682 New Zealand 0800-446-934  
Hong Kong 800-96-5941 Philippines 1-800-765-7404  
India 1-800-425-7888 Singapore 800-886-1028  
Indonesia 001-803-8861-1006 Taiwan 0800-006800  
Korea 080-551-2804 Thailand 001-800-886-0010

Fax +886-2-2378-6808

Email [tfasia@ti.com](mailto:tfasia@ti.com)  
[ti-china@ti.com](mailto:ti-china@ti.com)

Internet [support.ti.com/sc/pic/asia.htm](http://support.ti.com/sc/pic/asia.htm)

**Important Notice:** The products and services of Texas Instruments Incorporated and its subsidiaries described herein are sold subject to TI's standard terms and conditions of sale. Customers are advised to obtain the most current and complete information about TI products and services before placing orders. TI assumes no liability for applications assistance, customer's applications or product designs, software performance, or infringement of patents. The publication of information regarding any other company's products or services does not constitute TI's approval, warranty or endorsement thereof.

The floating bar is a trademark of Texas Instruments.  
All other trademarks are the property of their respective owners



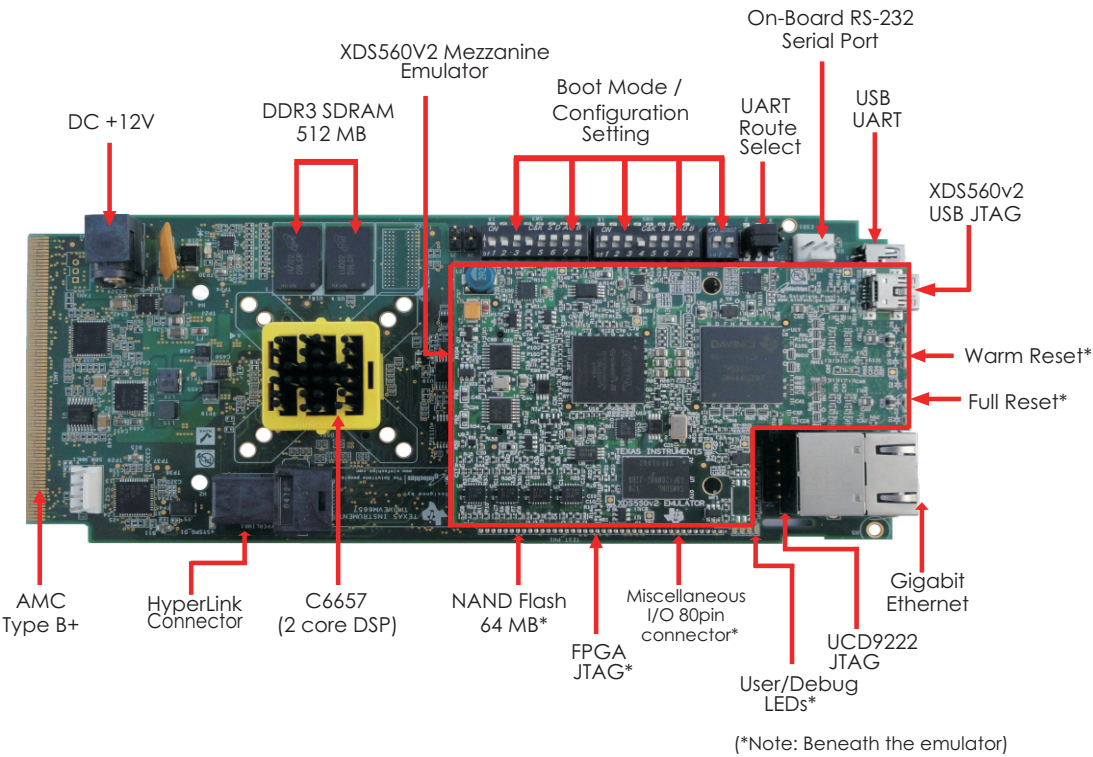
TMX320C6657 Evaluation Module Quick Setup Guide





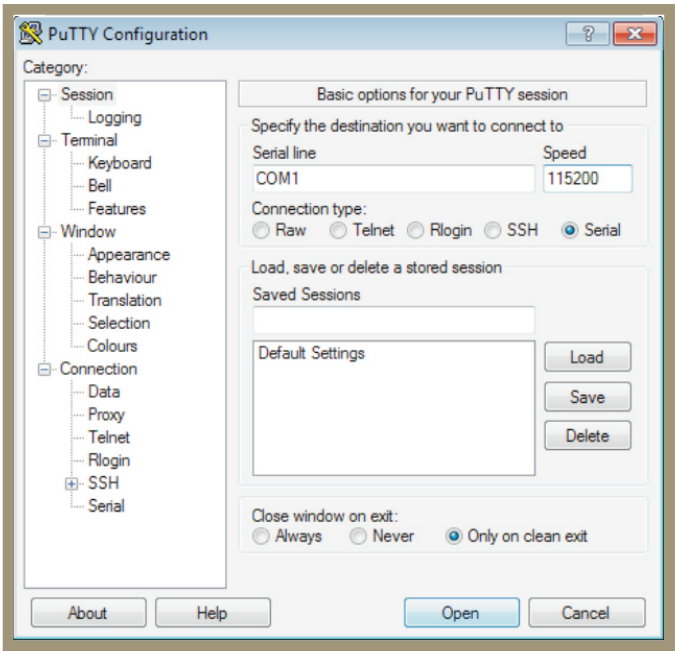
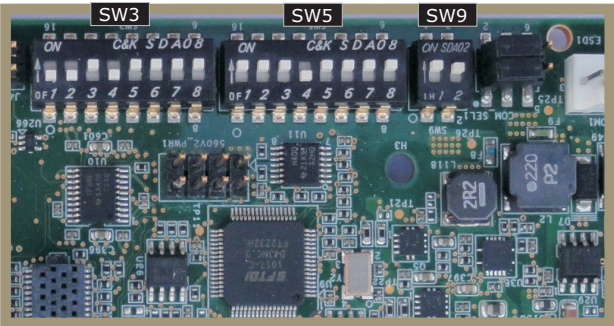
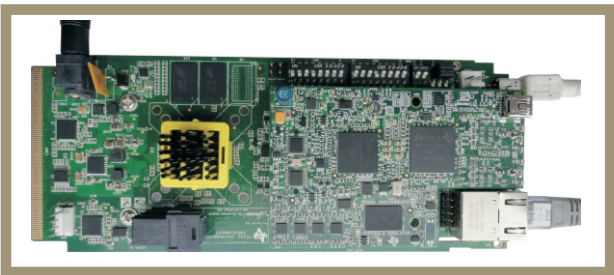
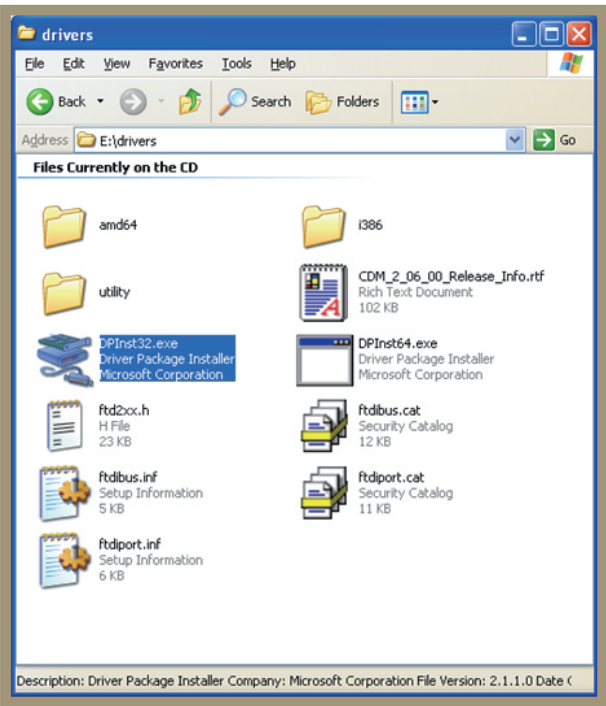
# TMDXEVM6657LE

## TMX320C6657 Evaluation Module (with Integrated XDS560v2 Emulator)

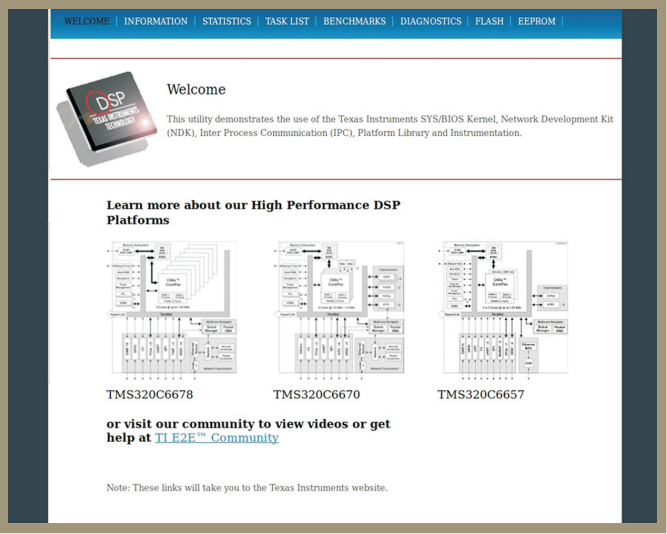


### The TMDXEVM6657LE (Evaluation Module) kit includes:

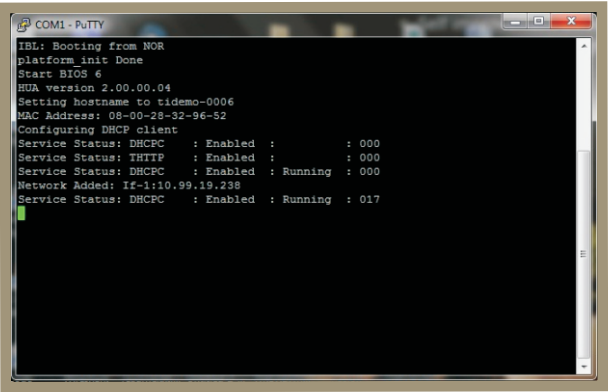
- TMX320C6657 Evaluation Module with Integrated XDS560v2 Emulator
- Power adapter and power cord
- USB cable for on-board XDS100 JTAG emulation
- Ethernet cable
- RS-232 serial cable
- Software (DVD) and documentation



Open your preferred serial console window (TeraTerm, HyperTerminal, PuTTY) and connect to the COM port for the EVM using the these configuration settings.



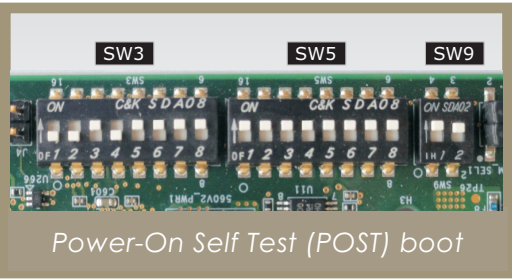
Open the web browser, copy the IP address (10.99.19.238) from step 4 to the web browser.



Press RESET\_FULL button on the EVM. Allow 40 seconds for the BIOS Out-Of-Box (OOB) Demo to complete booting. The demo acquires an IP address from server and displays it on console. If IP address do not display on console, re-press RESET\_FULL button. Copy the Network Added: Inf-1: IP address from serial console screen.

### Notes:

1. Additionally, this EVM has Power On Self Test(POST) boot mode settings. The settings of the EVM configuration switches (SW3, SW5 and SW9) for power-on self test boot is shown as figure. Press the RESET\_FULL button after changing switch settings and follow HyperTerminal setting in step 3.



2. Follow the READ\_ME\_FIRST instructions for installing tools, MCSDK 2.0 and demos on your PC.
3. Refer to the Getting Started Guide under MCSDK for details on boot configurations.
4. Visit the following website for the latest MCSDK updates:  
<http://www.ti.com/tool/bioslinuxmcsdk>