

NOTES: UNLESS OTHERWISE SPECIFIED.  
1. FABRICATE PER IPC-6012A CLASS 2.

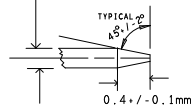
DIELECTRIC: ITEQ ITI686.  
COPPER: AS PER STACKUP.  
U.L. RATING: 94V-0 MINIMUM  
3. SURFACE FINISH: ENIG

- SOLDER MASK MATERIAL SHALL MEET ALL THE REQUIREMENTS OF IPC-SM-840C AND SHALL BE GREEN IN COLOR AND APPLIED OVER BARE COPPER.
- SILK SCREEN LEGEND TO BE APPLIED PER LAYER STACKUP USING WHITE NON-CONDUCTIVE EPOXY INK.
- 100% CONTINUITY TESTING USING DATABASE NETLIST SHALL BE PERFORMED, VENDOR TO IDENTIFY TEST PASSED IN SECONDARY SIDE.
- VENDOR TO MARK DATE CODE AND LOGO IN ETCH OR IN LEGEND.
- BOW AND TWIST SHALL NOT EXCEED 0.7% OF LONGEST SIDE.
- DIELECTRICS AND LINEWIDTHS MAY BE ADJUSTED TO MEET THE IMPEDANCE REQUIREMENTS.
- MINIMUM CONDUCTOR WIDTH: 4.0 MILS  
MINIMUM SPACING: 3.26 MILS
- THE PCB EDGE NEAR AMC CONNECTOR EDGE SHOULD BE AS SHOWN IN THE ABOVE FIG.
- DIMENSIONS ARE IN 'MM [INCHES]'.

### SCORE DETAIL

SCALE: NONE

63.036Mil [1.60MM]  
PCB THICKNESS



### LAYER STACK-UP

PRIMARY SIDE, SILK SCREEN	- 2 MILS
PRIMARY SIDE, SOLDER MASK	- 1.794 MILS
PRIMARY SIDE, LAYER 1	- 3.596 MILS
DIELECTRIC	- 1.26 MILS
GROUND LAYER, LAYER 2	- 4 MILS
DIELECTRIC	- 1.26 MILS
INNER LAYER, LAYER 3	- 5.014 MILS
DIELECTRIC	- 1.26 MILS
POWER LAYER, LAYER 4	- 5 MILS
DIELECTRIC	- 1.26 MILS
INNER LAYER, LAYER 5	- 3.814 MILS
DIELECTRIC	- 1.26 MILS
GROUND LAYER, LAYER 6	- 4 MILS
DIELECTRIC	- 1.26 MILS
GROUND LAYER, LAYER 7	- 3.814 MILS
DIELECTRIC	- 1.26 MILS
INNER LAYER, LAYER 8	- 5 MILS
POWER LAYER, LAYER 9	- 1.26 MILS
DIELECTRIC	- 5.014 MILS
INNER LAYER, LAYER 10	- 1.26 MILS
DIELECTRIC	- 4 MILS
GROUND LAYER, LAYER 11	- 1.26 MILS
DIELECTRIC	- 3.596 MILS
SECONDARY SIDE, LAYER 12	- 1.794 MILS
SECONDARY SIDE, SOLDER MASK	- 2 MILS
SECONDARY SIDE, SILK SCREEN	

67.036 MILS +/-10%

### SINGLE ENDED

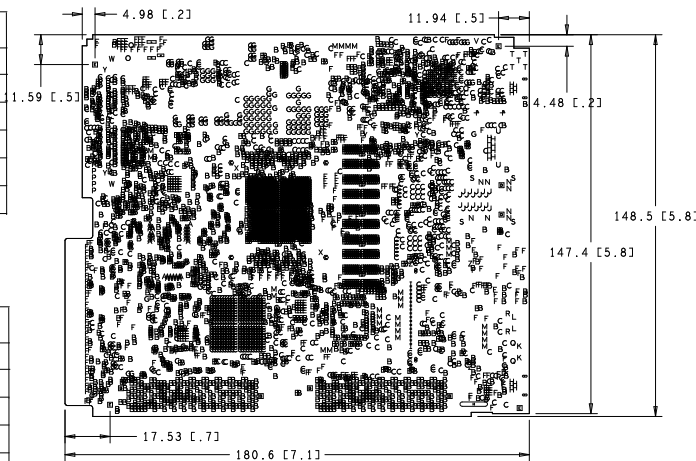
LAYER NO.	CONDUCTOR WIDTH	REFERENCE LAYER	IMPEDANCE +/-10%
L01_TOP	6 MILS	L02_GND1	50 OHMS
L03_SIG1	4.5 MILS	L02_GND1	50 OHMS
L05_SIG2	4.5 MILS	L06_GND2	50 OHMS
L08_SIG3	4.5 MILS	L07_GND3	50 OHMS
L10_SIG4	4.5 MILS	L11_GND4	50 OHMS
L12_BOT	6 MILS	L11_GND4	50 OHMS

### DIFFERENTIAL 100E

LAYER NO.	CONDUCTOR WIDTH	SPACING	REFERENCE LAYER	IMPEDANCE +/-10%
L01_TOP	4 MILS	6.5 MILS	L02_GND1	100 OHMS
L03_SIG1	4 MILS	7.5 MILS	L02_GND1	100 OHMS
L05_SIG2	4 MILS	7.5 MILS	L06_GND2	100 OHMS
L08_SIG3	4 MILS	7.5 MILS	L07_GND3	100 OHMS
L10_SIG4	4 MILS	7.5 MILS	L11_GND4	100 OHMS
L12_BOT	4 MILS	6.5 MILS	L11_GND4	100 OHMS

### DIFFERENTIAL 90E

LAYER NO.	CONDUCTOR WIDTH	SPACING	REFERENCE LAYER	IMPEDANCE +/-10%
L01_TOP	4.5 MILS	5 MILS	L02_GND1	90 OHMS
L10_SIG4	4 MILS	4.5 MILS	L11_GND4	90 OHMS
L12_BOT	4.5 MILS	5 MILS	L11_GND4	90 OHMS



CUSTOMER NAME: eINFOCHIPS LIMITED  
DATE: 18-06-2014 JOB NUMBER: EINF4984B  
DESIGNED AT: eINFOCHIPS LIMITED  
PART NO/CARD REF: K2L EVM CARD REV: 02  
FILM LAYER: FABRICATION LAYER

DRILL CHART: TOP to BOTTOM				
ALL UNITS ARE IN MILS				
FIGURE	SIZE	TOLERANCE	PLATED	QTY
A	7.87	+3.0/-3.0	PLATED	36
B	8.0	+3.0/-3.0	PLATED	3721
C	10.0	+3.0/-3.0	PLATED	1378
D	11.81	+3.0/-3.0	PLATED	38
E	12.0	+3.0/-3.0	PLATED	79
F	14.0	+3.0/-3.0	PLATED	288
G	16.0	+3.0/-3.0	PLATED	159
H	28.0	+3.0/-3.0	PLATED	19
I	32.0	+3.0/-3.0	PLATED	17
J	35.43	+3.0/-3.0	PLATED	20
K	39.0	+3.0/-3.0	PLATED	2
L	39.37	+3.0/-3.0	PLATED	2
M	40.0	+3.0/-3.0	PLATED	28
N	40.16	+3.0/-3.0	PLATED	8
O	42.0	+3.0/-3.0	PLATED	2
P	45.0	+3.0/-3.0	PLATED	5
Q	51.0	+3.0/-3.0	PLATED	2
R	51.18	+3.0/-3.0	PLATED	2
S	61.81	+3.0/-3.0	PLATED	4
T	63.0	+3.0/-3.0	PLATED	5
U	91.0	+3.0/-3.0	PLATED	2
V	106.0	+3.0/-3.0	PLATED	1
W	156.0	+3.0/-3.0	PLATED	2
X	25.98	+2.0/-0.0	NON-PLATED	2
Y	40.0	+2.0/-2.0	NON-PLATED	4
Z	42.0	+2.0/-2.0	NON-PLATED	4
A	47.0	+2.0/-2.0	NON-PLATED	2
B	50.0	+2.0/-2.0	NON-PLATED	4
C	92.52	+2.0/-2.0	NON-PLATED	4
D	127.95	+2.0/-2.0	NON-PLATED	2
E	138.0	+2.0/-2.0	NON-PLATED	4
F	75.0x28.0	+3.0/-3.0	PLATED	4
G	38.0x75.0	+3.0/-3.0	PLATED	2
H	98.43x39.37	+3.0/-3.0	PLATED	1
I	118.11x39.37	+3.0/-3.0	PLATED	1
J	137.8x39.37	+3.0/-3.0	PLATED	1
K	421.0x67.0	+2.0/-2.0	NON-PLATED	1

UNLESS OTHERWISE SPECIFIED ALL DIMENSIONS ARE IN <input type="checkbox"/> INCHES <input checked="" type="checkbox"/> MILLIMETERS		eINFOCHIPS LIMITED	
		DRAWING TITLE	
		FABRICATION DRAWING	
DATE 18062014	SIZE D	PART NUMBER 17_00176_02	REV 02
SCALE 1/1		SHEET 1 OF 1	