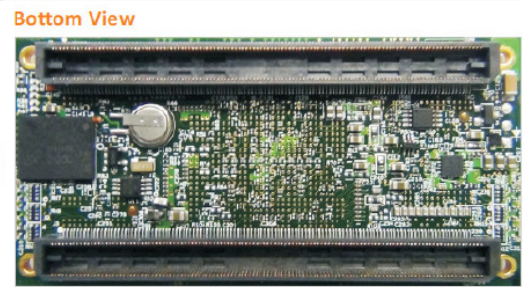
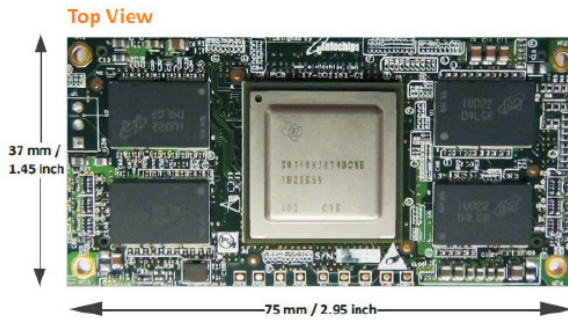


DM816x, DM814x SOM Specifications



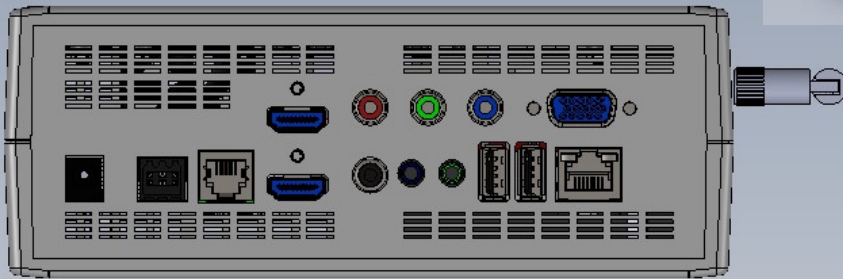
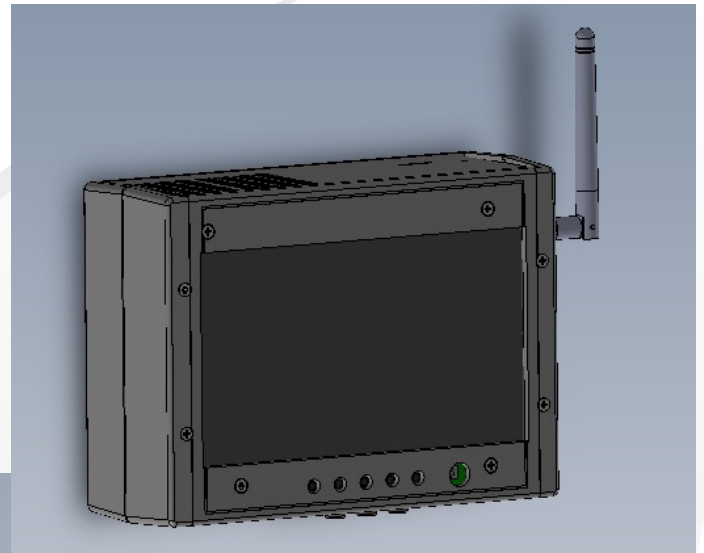
	DM816x SOM	DM814x SOM
Processor	TMS320DM816x TMS320C6A816x	TMS320DM814x
Form Factor	75mm x 37mm (2.95" x 1.45")	
Memory	Total 1GB DDR3 SDRAM	
Volatile	512MB NAND Flash	
Non-Volatile		
Video Input		
Input-1	16/24-bit HD Video or two 8-bit SD Video	16/24-bit HD Video
Input-2	16-bit HD Video or two 8-bit SD Video	8/16-bit HD Video
Input-3	-	8-bit SD Video
Input-4	-	Image Sensor input (up to 16-bits)
Video Output		
Output-1	HDMI 1.3	HDMI 1.3
Output-2	16/24/30-bit HD Video	16/24-bit HD Video
Output-3	Component or three SD Analog video	Two SD Analog Video
Audio	Three McASP McBSP	Five McASP McBSP
MMC/SD/SDIO	SD/SDIO	Three SD/SDIO
SATA	Two	One
USB 2.0	Two (Host/Device)	Two (Host/Device/OTG)
Ethernet	Two (GMII)	Single (RGMII)
PCIe	2x PCIe 2.0	1x PCIe 2.0
UART	Three	Four
SPI	One	Two
I2C	Two	One
CAN	-	Two
GPIO	Eight	
Reset	POR, Reset in, Reset out/WD out	
Other features	RTC with battery backup, Secure memory, Fan control, Temperature monitoring	

einfochips – Confidential – Preliminary Information



The Solutions People

Andromeda Specifications



SOM	eInfochips' DM816x SOM OR eInfochips' DM814x SOM
Video input	Input-1 HDMI 1.3 Input-2 Analog Component HD Video
Video Output	Output-1 HDMI 1.3 Output-2 VGA Output-3 CVBS
Display	7" TFT Color LCD (800 x 480) with Resistive Touch
Analog Audio	Input Stereo Line Input Output Stereo Headphone Output
Storage	2.5" SATA Hard Disc Support (Optional)
USB	Two USB 2.0 Host Ports
Ethernet	1 Gigabit Ethernet
Wireless Interface	802.11 b/g/n Wi-Fi & Bluetooth
PCIe	PCIe 2.0 (Optional)
Serial Interface	RS232 & RS485 Interfaces
Trigger IO	Two trigger Inputs, Two Trigger Outputs
Power Input	12VDC @ 5Amp
Form Factor	190 mm x 140 mm x 70 mm (7.48" x 5.51" x 2.76")

eInfochips – Confidential – Preliminary Information



The Solutions People