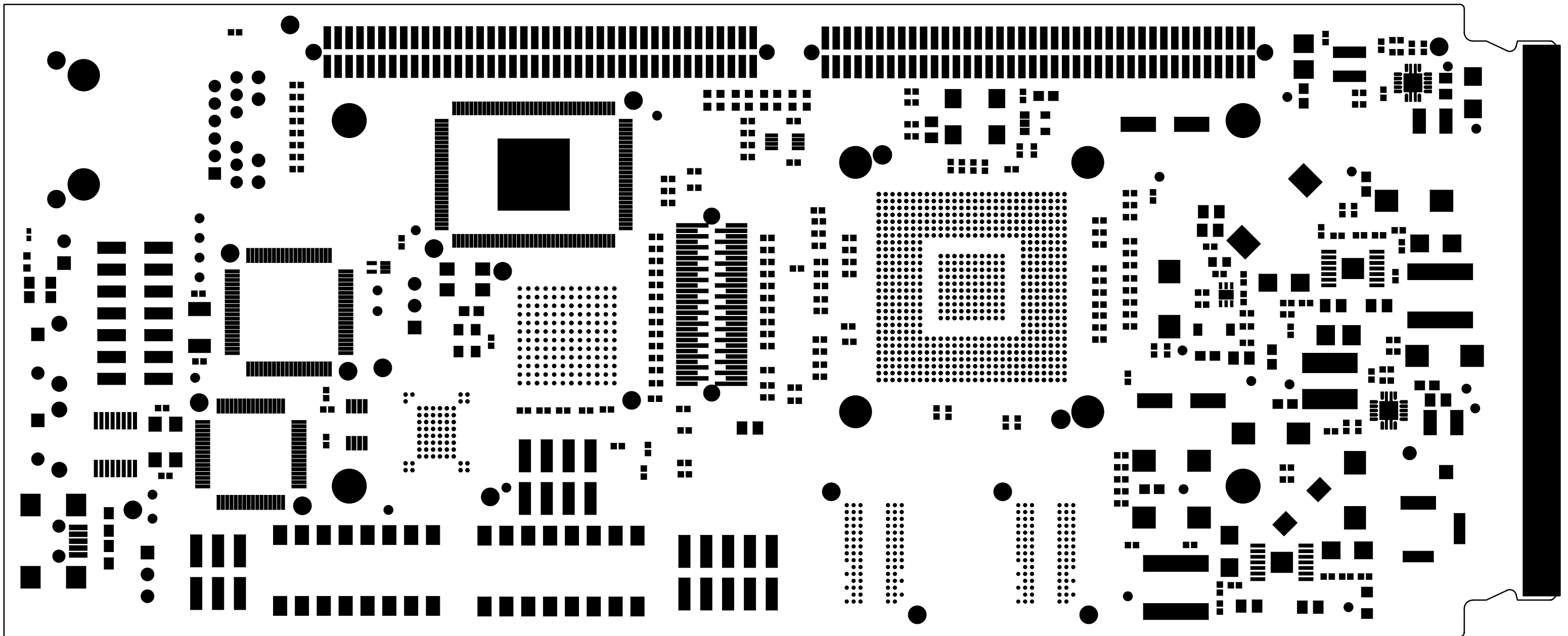
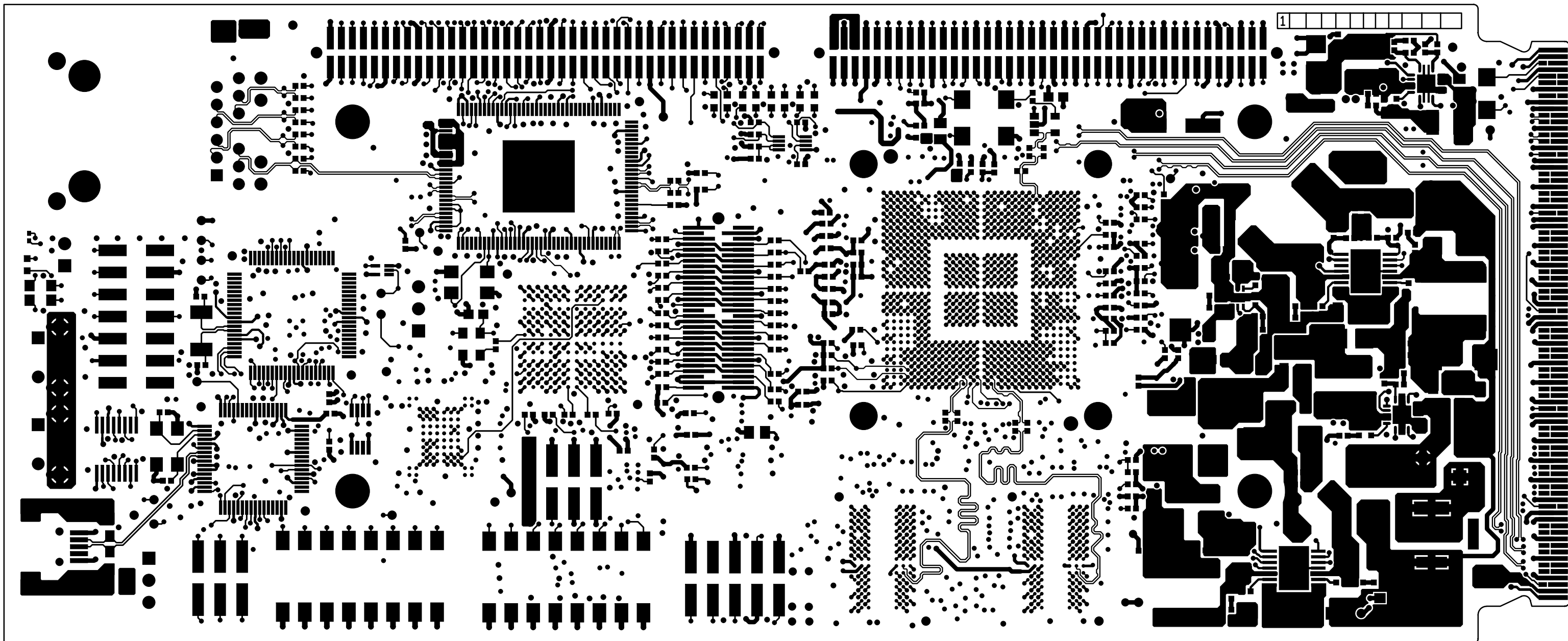


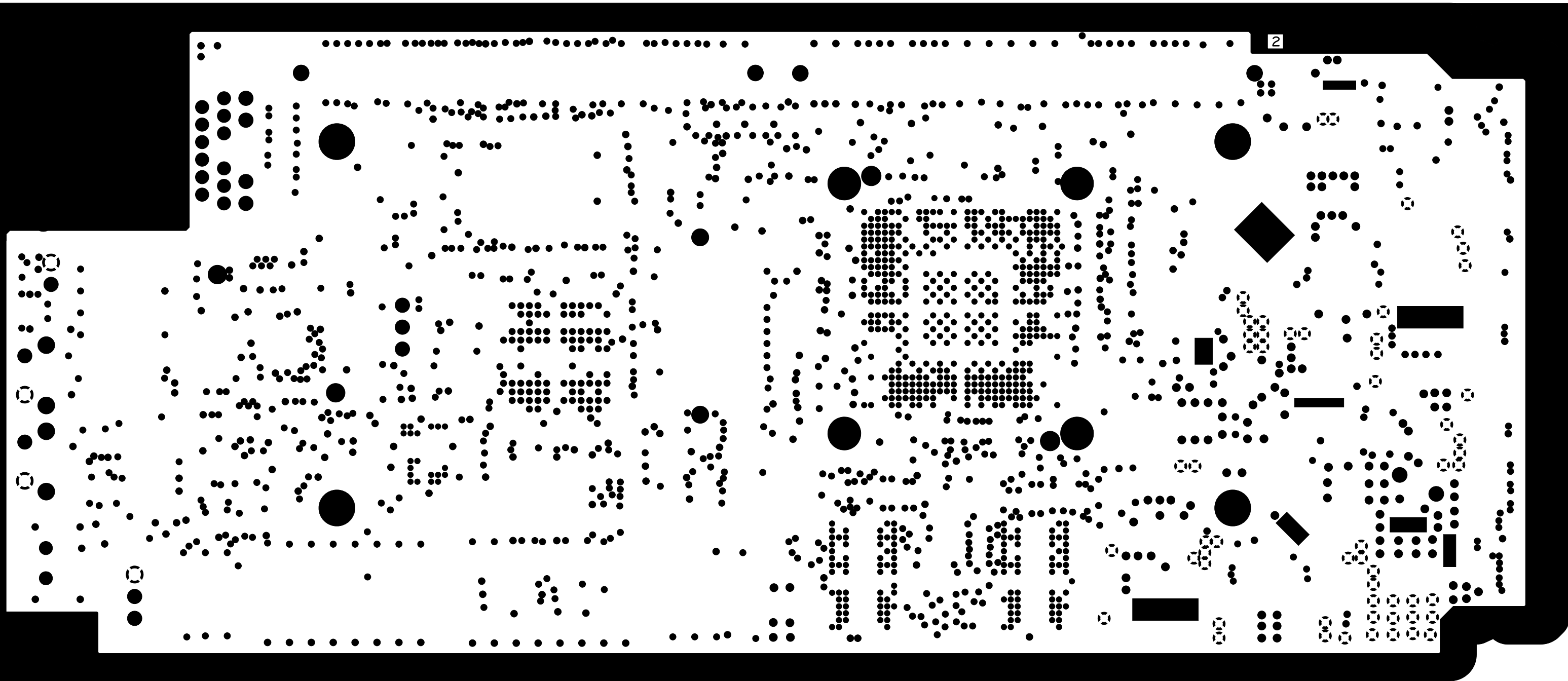
COMPANY NAME : eINFOCHIPS LIMITED	
DATE: 14-10-2010 JOB NUMBER: EINF4219_EVM_CARD	
DESIGNED BY: eINFOCHIPS LIMITED	
PART NO/CARD REF: C6457_LCEVM	REV - 02
FILM LAYER: PRIMARY SIDE SILKSCREEN	



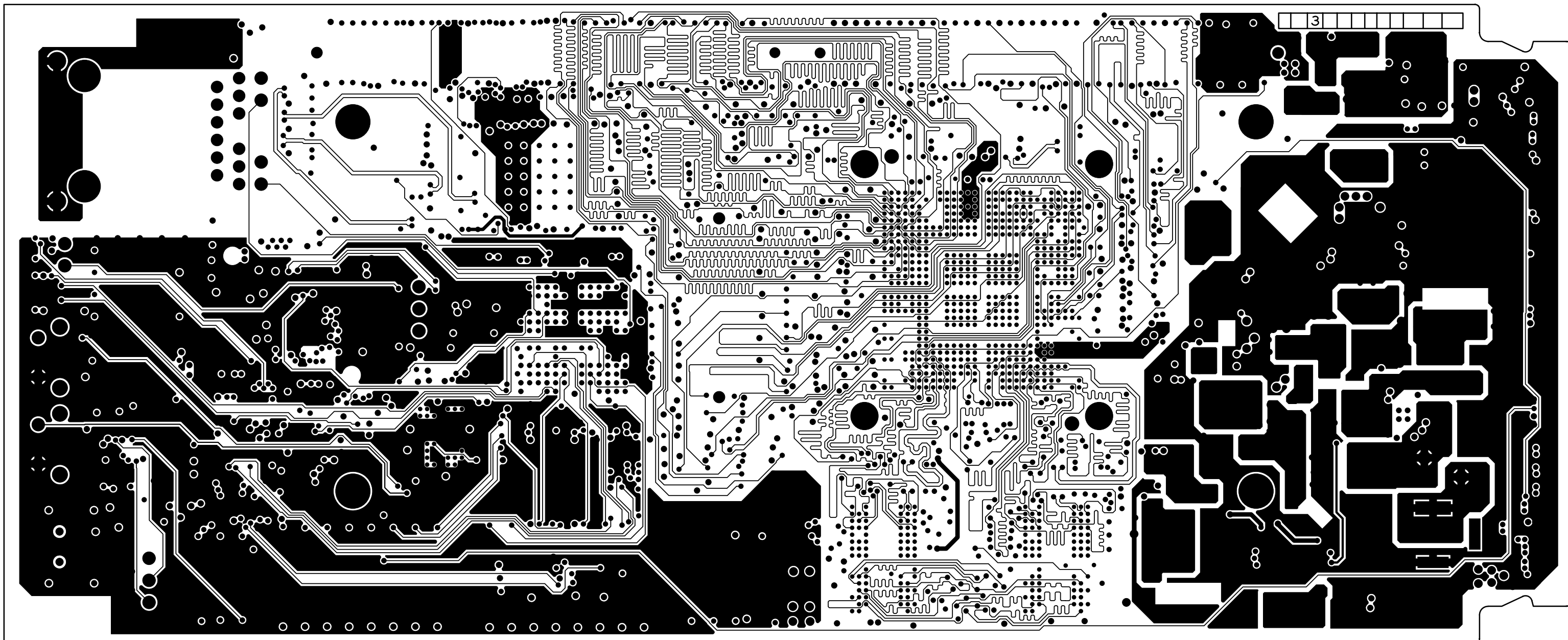
COMPANY NAME : eINFOCHIPS LIMITED	
DATE: 14-10-2010	JOB NUMBER: EINF4219_EVM_CARD
DESIGNED BY: eINFOCHIPS LIMITED	
PART NO/CARD REF: C6457_LCEVM	REV - 02
FILM LAYER: PRIMARY SIDE SOLDERMASK	



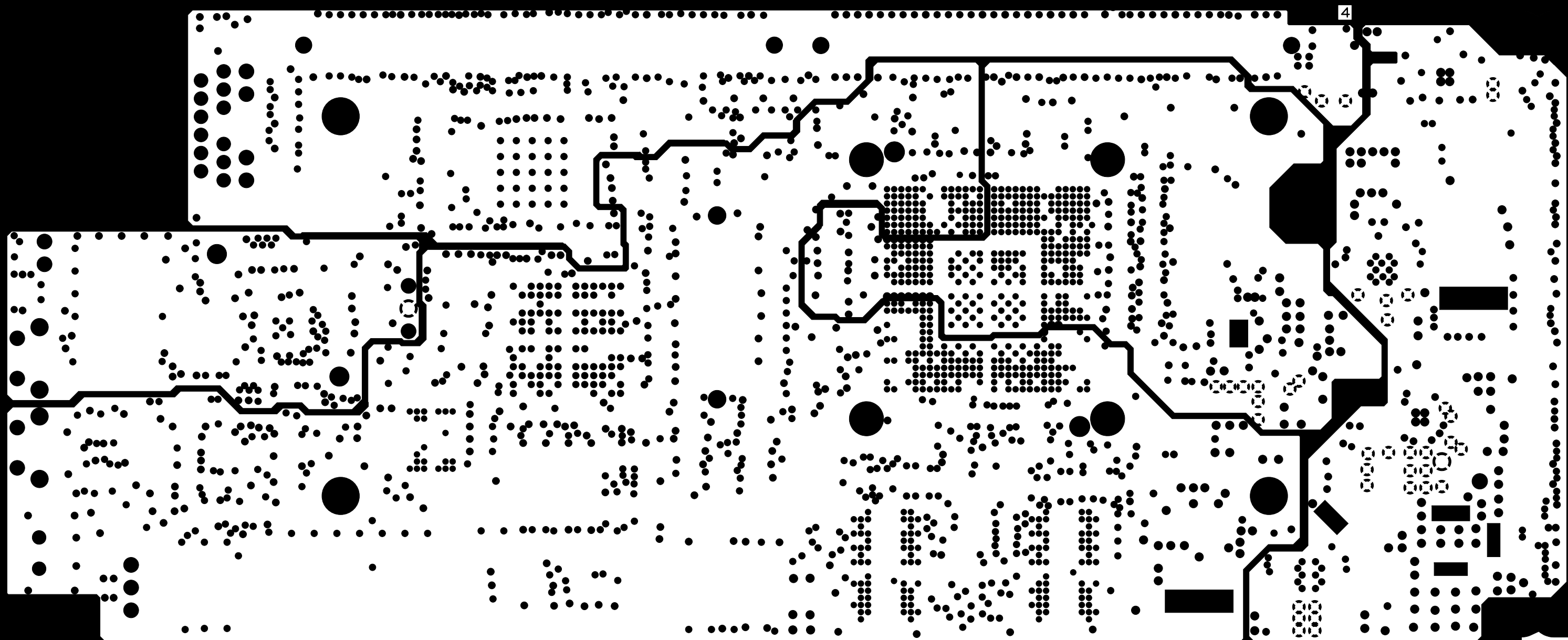
COMPANY NAME : eINFOCHIPS LIMITED	
DATE:14-10-2010 JOB NUMBER:EINF4219_EVM_CARD	
DESIGNED BY:eINFOCHIPS LIMITED	
PART NO/CARD REF: C6457_LCEVM	REV - 02
FILM LAYER: PRIMARY SIDE	



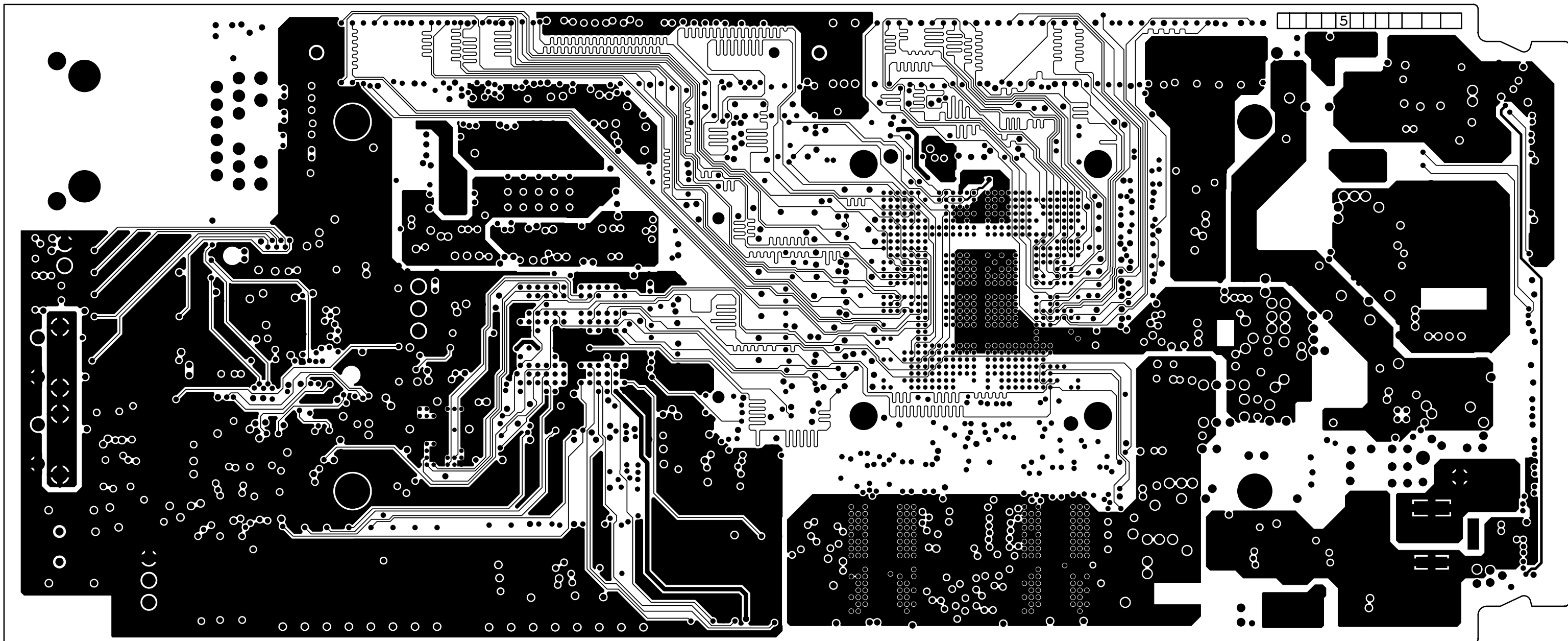
COMPANY NAME : eINFOCHIPS LIMITED	
DATE: 14-10-2010 JOB NUMBER: EINF4219 _EVM_CARD	
DESIGNED BY: eINFOCHIPS LIMITED	
PART NO/CARD REF: C6457 _LCEVM	REV - 02
FILM LAYER: LAYER 2 (GROUND-1)	



COMPANY NAME : eINFOCHIPS LIMITED	
DATE: 14-10-2010 JOB NUMBER: EINF4219_EVM_CARD	
DESIGNED BY: eINFOCHIPS LIMITED	
PART NO/CARD REF: C6457_LCEVM	REV - 02
FILM LAYER: LAYER 3 (SIGNAL-1)	



COMPANY NAME : eINFOCHIPS LIMITED	
DATE: 14-10-2010 JOB NUMBER: EINF4219 _EVM_ CARD	
DESIGNED BY: eINFOCHIPS LIMITED	
PART NO/CARD REF: C6457 _LCEVM	REV - 02
FILM LAYER: LAYER 4 (POWER-1)	



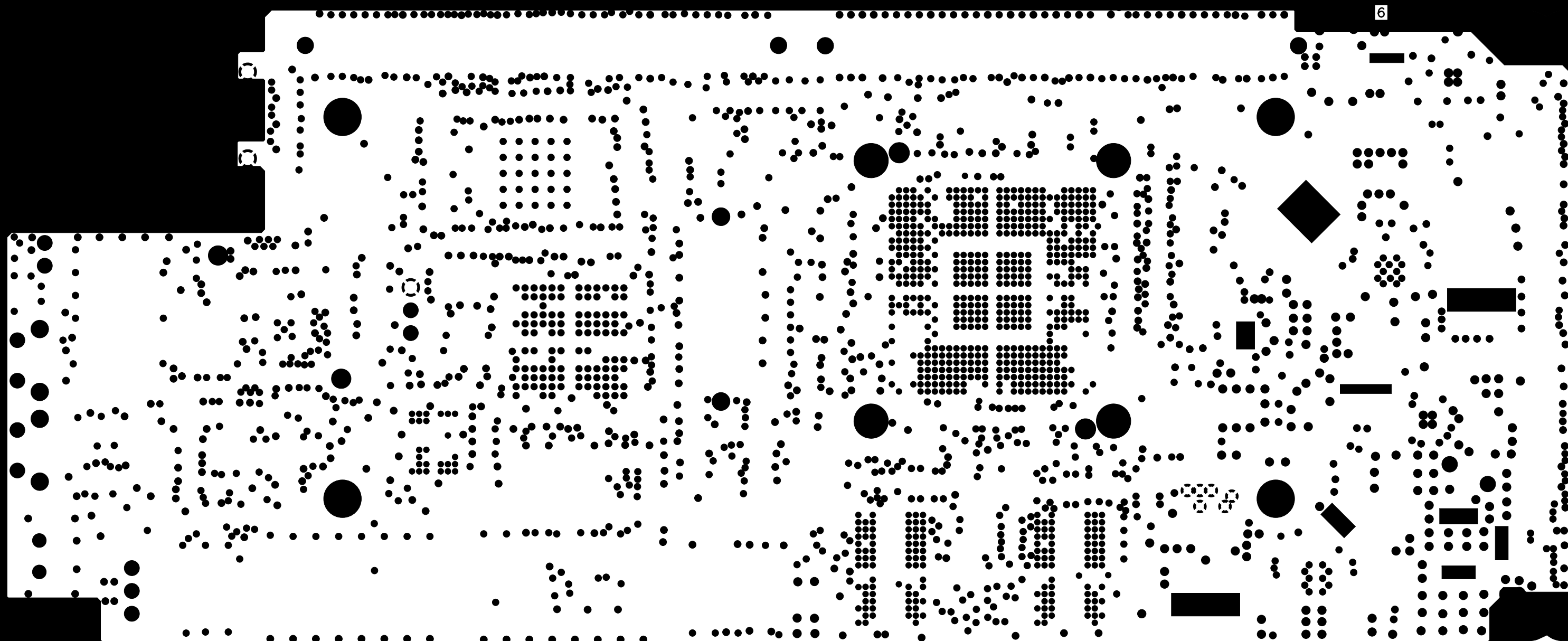
COMPANY NAME : eINFOCHIPS LIMITED

DATE: 14-10-2010 JOB NUMBER: EINF4219_EVM_CARD

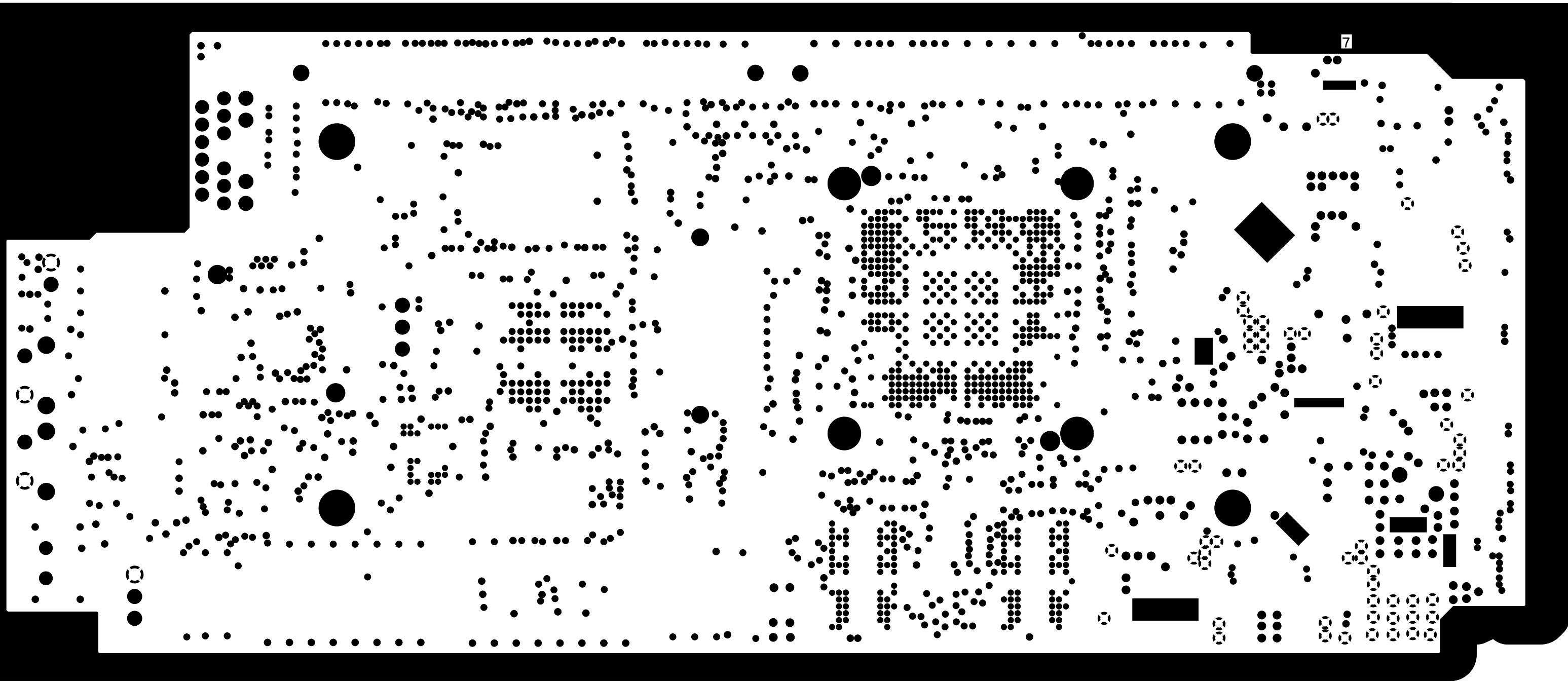
DESIGNED BY: eINFOCHIPS LIMITED

PART NO/CARD REF: C6457_LCEVM REV - 02

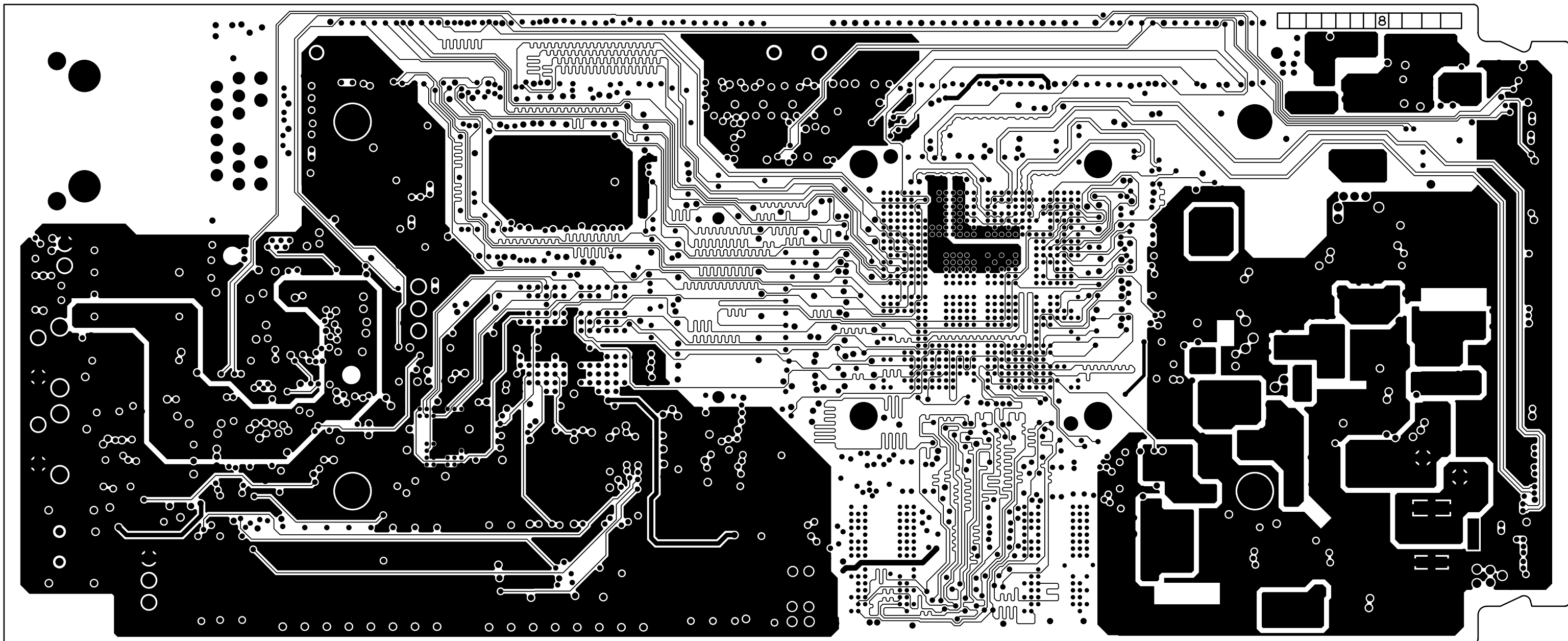
FILM LAYER: LAYER 5 (SIGNAL 2)



COMPANY NAME : eINFOCHIPS LIMITED	
DATE: 14-10-2010 JOB NUMBER: EINF4219 _EVM_CARD	
DESIGNED BY: eINFOCHIPS LIMITED	
PART NO/CARD REF: C6457 _LCEVM	REV - 02
FILM LAYER: LAYER 6(POWER-2)	



COMPANY NAME : eINFOCHIPS LIMITED	
DATE: 14-10-2010 JOB NUMBER: EINF4219 _EVM_CARD	
DESIGNED BY: eINFOCHIPS LIMITED	
PART NO/CARD REF: C6457 _LCEVM	REV - 02
FILM LAYER: LAYER 7 (GROUND - 2)	



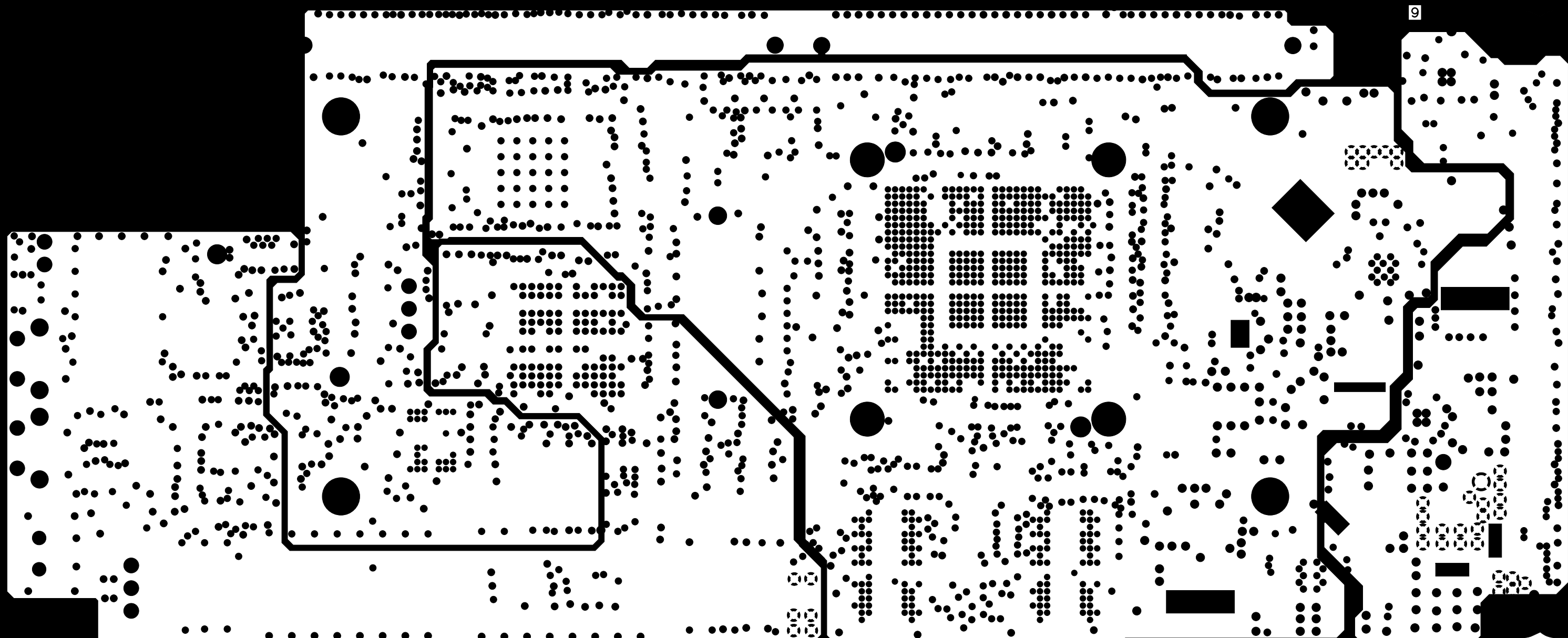
COMPANY NAME : eINFOCHIPS LIMITED

DATE: 14-10-2010 JOB NUMBER: EINF4219 _EVM_CARD

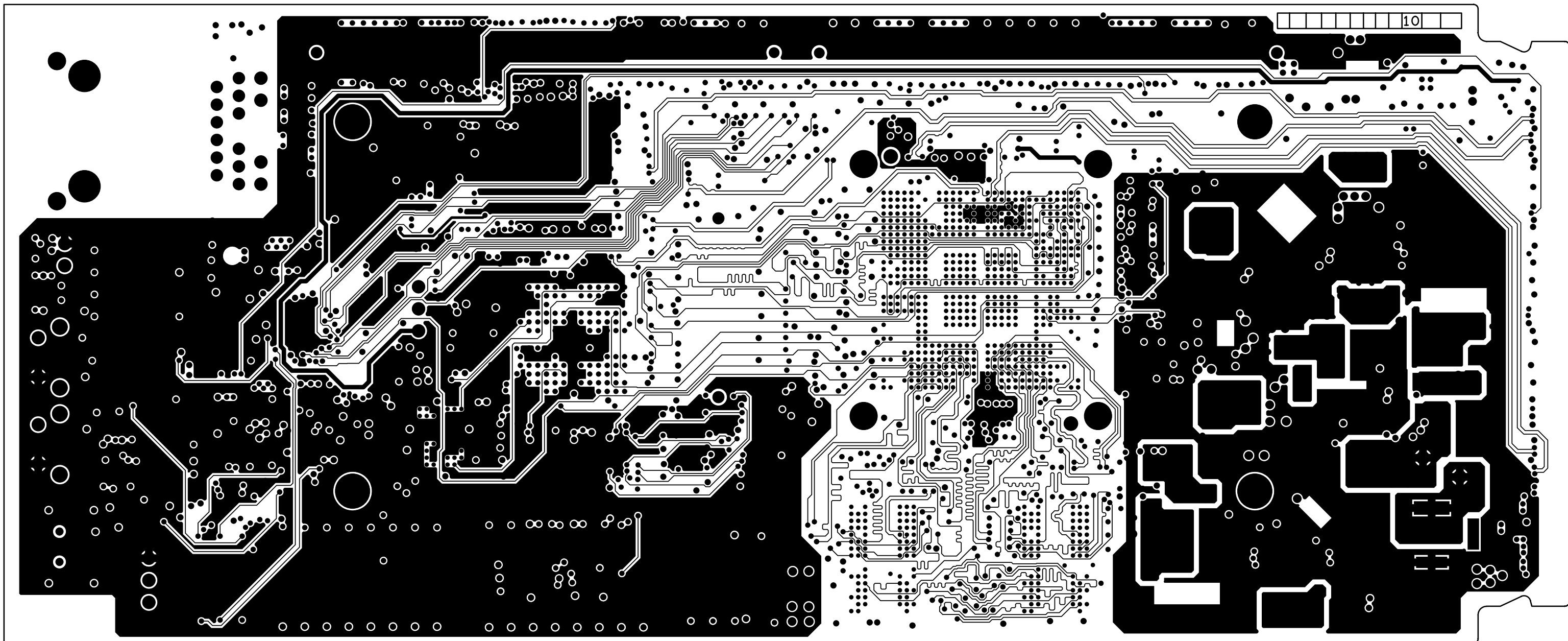
DESIGNED BY: eINFOCHIPS LIMITED

PART NO/CARD REF: C6457 _LCEVM REV - 02

FILM LAYER: LAYER 8 (SIGNAL - 3)



COMPANY NAME : eINFOCHIPS LIMITED	
DATE: 14-10-2010 JOB NUMBER: EINF4219 _EVM_CARD	
DESIGNED BY: eINFOCHIPS LIMITED	
PART NO/CARD REF: C6457 _LCEVM	REV - 02
FILM LAYER: LAYER 9	(POWER-3)



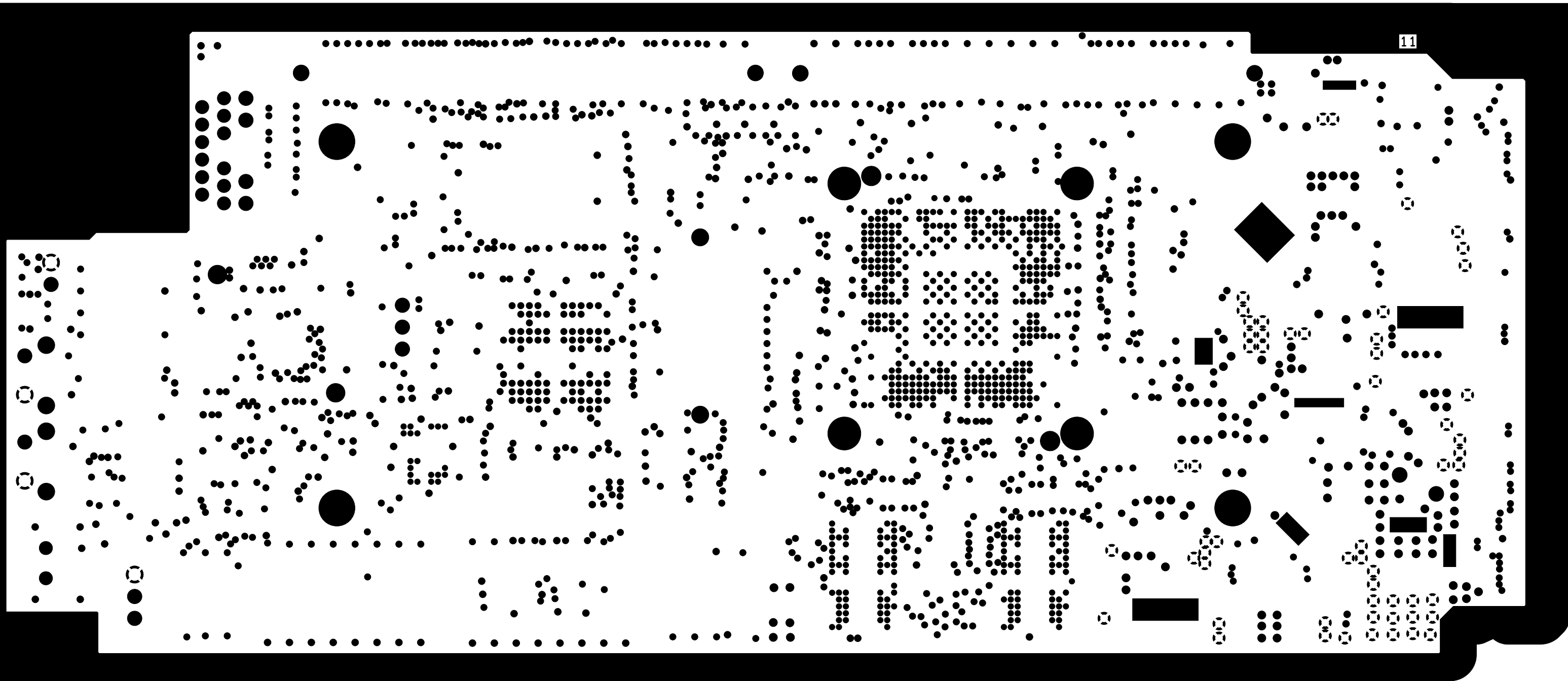
COMPANY NAME : eINFOCHIPS LIMITED

DATE: 14-10-2010 JOB NUMBER: EINF4219_EVM_CARD

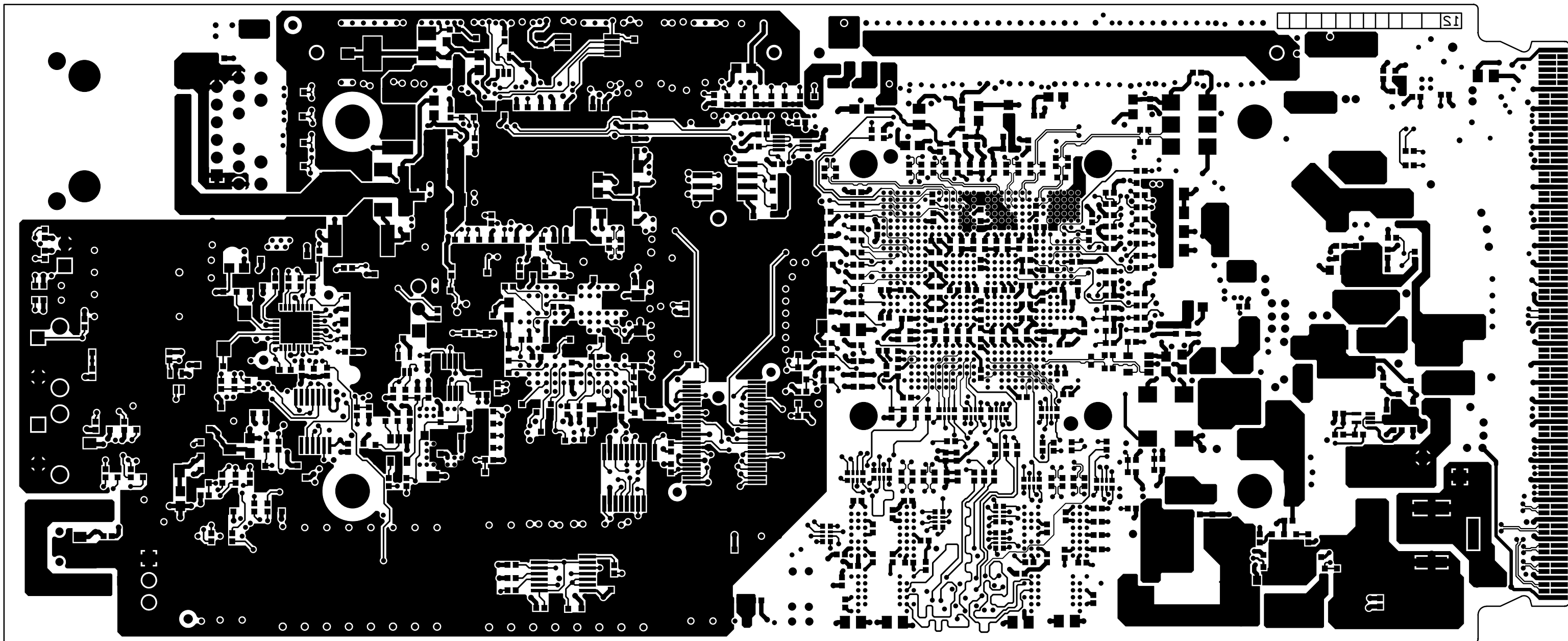
DESIGNED BY: eINFOCHIPS LIMITED

PART NO/CARD REF: C6457_LCEVM REV - 02

FILM LAYER: LAYER 10 (SIGNAL - 4)



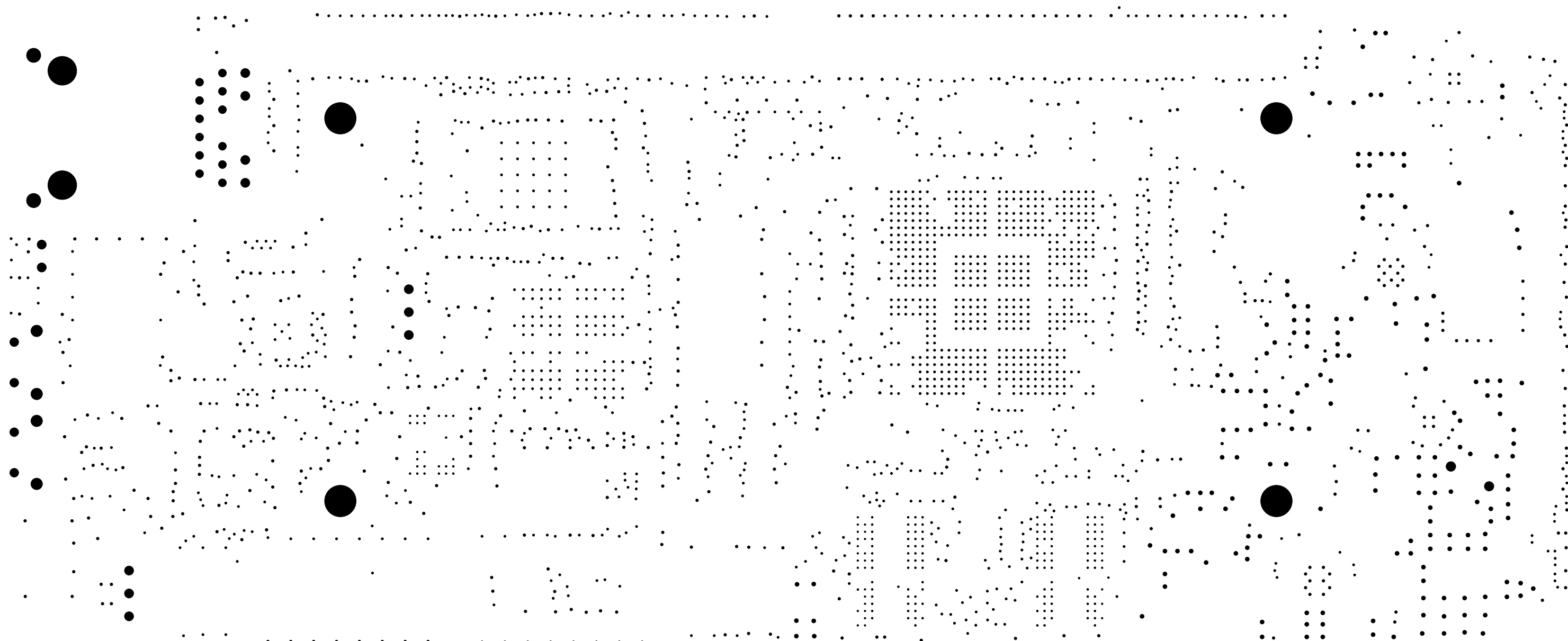
COMPANY NAME : eINFOCHIPS LIMITED	
DATE: 14-10-2010 JOB NUMBER: EINF4219 _EVM_CARD	
DESIGNED BY: eINFOCHIPS LIMITED	
PART NO/CARD REF: C6457 _LCEVM	REV - 02
FILM LAYER: LAYER 11 (GROUND-3)	



COMPANY NAME : eINFOCHIPS LIMITED	
DATE: 14-10-2010 JOB NUMBER: EINF4219_EVM_CARD	
DESIGNED BY: eINFOCHIPS LIMITED	
PART NO/CARD REF: C6457_LCEVM	REV - 02
FILM LAYER: SECONDARY SIDE	



COMPANY NAME : eINFOCHIPS LIMITED	
DATE: 14-10-2010	JOB NUMBER: EINF4219_EVM_CARD
DESIGNED BY: eINFOCHIPS LIMITED	
PART NO/CARD REF: C6457_LCEVM	REV - 02
FILM LAYER: SECONDARY SIDE SOLDERMASK	



—
—
I

