

EVMC6472 FAQ

1. [What is the difference between Warm and Cold Reset?](#)
2. [If On-board emulation and external emulation both are connected which will have higher priority?](#)
3. [From where is the latest Software Development Kit available?](#)
4. [Does CCSv4 supplied with the EVM kit support external emulation?](#)
5. [What is the form-factor for the EVM? Is it compatible with uTCA architecture?](#)
6. [How can I obtain the Revision ID of EVM Board?](#)
7. [Can the EVM be powered solely by the AMC connector?](#)
8. [Can the EVM be hot-plugged in the AMC carrier?](#)
9. [Can I use CCSv3.3 with this EVM?](#)
10. [How to perform network \(EMAC\) booting on this EVM?](#)
11. [I get the fatal error: could not open source file "csl.h" error while building examples based on NDK while using SDK 3.0. What should I do to solve these errors?](#)

1. What is the difference between Warm and Cold Reset?

Cold reset is equivalent to Power-on Reset, when asserted it resets most major ICs (including the DSP) of the board. Warm reset when asserted resets only the DSP. For DSP Warm Reset has the same effects as a Cold Reset / Power-on Reset, except that in this case, the emulation logic and PLL3 are not reset.

2. If On-board emulation and external emulation both are connected which will have higher priority?

External emulation will have higher priority.

3. From where is the latest Software Development Kit available?

Latest Software Development Kit is available at <http://www.einfochips.com/TI/EVM6472Support.php>

4. Does CCSv4 supplied with the EVM kit support external emulation?

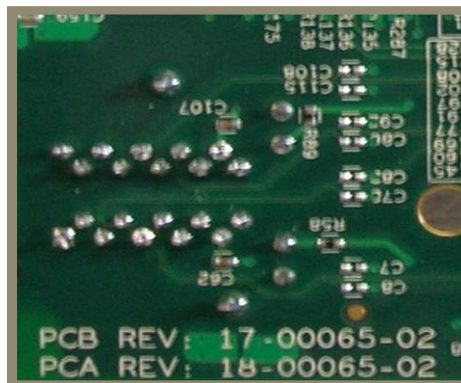
CCSv4 supplied with EVM kit only supports On-board emulation. For external emulation one needs to purchase a license from TI.

5. What is the form-factor for the EVM? Is it compatible with uTCA architecture?

Form-factor of the EVM is 73.5mm x 180.6mm. The EVM is compatible with uTCA architecture.

6. How can I obtain the Revision ID of EVM Board?

Board PCB (Printed Circuit Board) and PCA (Printed Circuit Assembly) revision are located below RJ-45 Jack in bottom silk, as shown in below figure.



Below is the description for the PCA/PCB:

PCA REV	PCB REV	Description
18-00065-01	17-00065-01	Proto boards (Initial engineering samples)
18-00065-02	17-00065-02	Production build – Released in October-2009 Modifications: <ul style="list-style-type: none">- Modified TSIP connections to AMC edge connector- Addition of Reset control from AMC carrier
18-00065-03	17-00065-03	Internal - Proto boards with Ethernet PHY changed to 88E1145 for SGMII feature addition
18-00065-04	17-00065-04	Production build – Released in March-2010 <ul style="list-style-type: none">- Differential AMC Telecom clock input supported

Note: Last two digits represent major PCB / PCA revision number.

7. Can the EVM be powered solely by the AMC connector?

Yes, the EVM can be solely powered through AMC connector. Alternately, the EVM may be powered through DC power supply adaptor provided with the EVM kit.

8. Can the EVM be hot-plugged in the AMC carrier?

Yes, the EVM can be hot-plugged in the AMC carrier.

9. Can I use CCSv3.3 with this EVM?

Yes, CCSv3.3 can be used with this EVM by using an external emulator. Please select TCI6486 configuration in the CCSv3.3 setup.

CCSv3.3 cannot be used with an on-board emulator since the CCSv3.3 XDS100 driver does not support TMS320C64x+ processor family, further explained in the below link:

[http://wiki.davincidsp.com/index.php/XDS100#Installation_for_Code_Composer_Studio_v3.3 .28X_DS100v1_Hardware_Only.29](http://wiki.davincidsp.com/index.php/XDS100#Installation_for_Code_Composer_Studio_v3.3_.28X_DS100v1_Hardware_Only.29)

10. How to perform network (EMAC) booting on this EVM?

For boards with **PCA REV: 18-00065-01 & PCA REV: 18-00065-02**, follow below steps to perform EMAC boot and receive BOOTP packet:

- a. Please ensure that ECO has been implemented for PCA REV: 18-00065-01 & PCA REV: 18-00065-02. ECO is provided at <http://einfochips.com/TI/evm6472-support.php>.
- b. Set bootmode as 0x9: set SW2.1=ON, SW2.2=OFF, SW2.3=OFF, SW2.4=ON
- c. Set configuration to 0x10. SW1.1=OFF, SW1.2=OFF, SW1.3=OFF, SW1.4=OFF, SW1.5=ON. This is required for RGMII EMAC boot as, CPU speed should be x20, greater than 375MHz. Refer Section 2.1.2 of SPRZ300 (Silicon Errata of tms320c6472).
- d. Other switch settings: Set SW1.6=ON, SW1.7=ON, SW1.8=ON, SW2.5=ON, SW3.1=OFF, SW3.2=OFF.
- e. Connect the EVM with PC using a 10/100/1000 Mbps capable ethernet switch
- f. Power on the board
- g. Start packet capture on PC using a packet capture utility like Ethereal
- h. Hit warm reset (SW4)
- i. Stop packet capture after approx 5 sec
- j. Apply capture filter for BOOTP
- k. You should now see a BOOTP packet

For all versions of board, you can perform EMAC boot using following software work-around:

- The POST flashed into the version 04 boards allows the user to perform EMAC boot on port 0 once POST is completed.
- For version 02 boards, the user can flash the I2C EEPROM (address 0x50) with the latest POST available in SDK Version 3.0 or later to perform EMAC boot on port 0 once POST is completed.
- Optionally you can download the POST image with EMAC boot implemented from [here](#). Flash this EEPROM image to I2C EEPROM address 0x50 using the I2C EEPROM writer.

11. I get the **fatal error: could not open source file "csl.h" error while building examples based on NDK while using SDK 3.0. What should I do to solve these errors?**

In order to solve this error, please download and install the latest SDK from [here](#).